



- Dual Range 60 lb Capacity
- 3,000 PLU's & 1,000 Ingredients
 - Optional Networking
- 50 Standard Label Formats
- Legal for Trade - COC # 07-042A2

CL5000

LABEL PRINTING SCALE

**Wireless
Networking
Available**



CAS
S • C • A • L • E



CL 5000 LABEL PRINTING Scale

PRODUCT LINE-UP



Standard Bench Model



Pole Model



Hanging Model

FEATURES

Display

The **VFD** display is used for displaying Tare, Weight, Unit Price and Total Price. The **Alphanumeric** Display is used for all program menus, PLU names, scrolling message, etc. The bright purple display gives high legibility for programming and promotion.



PLU Keys

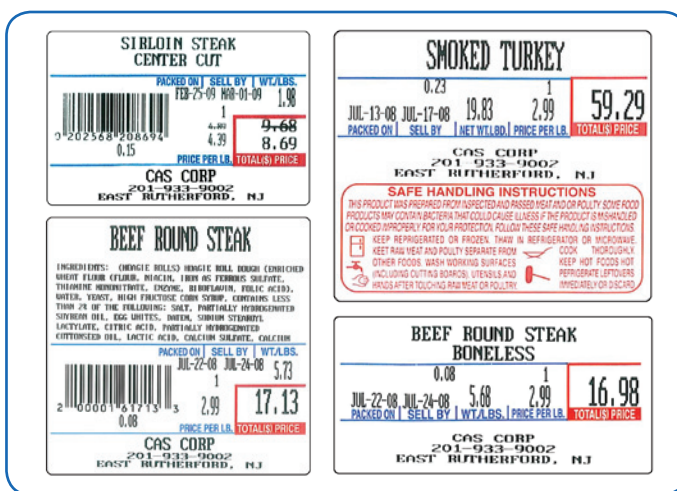
The **Double Click Call** feature allows the operator to recall PLU's by double-clicking the speed key instead of having to use the shift key.

The Standard Bench Model comes with 96 total speed keys, while the Pole Model & Hanging Model comes equipped with a total of 144 Speed Keys.

LAMB PATTIES	VEAL CUBES	VEAL CUBE STEAK	PORK LOIN TOP LOIN
CHICKEN SKEWER	VEAL FOR STEW	VEAL BONES	PORK SAUSAGE
BEEF SKEWER	LAMB LOIN	LAMB RIB CHOPS	DUCK

Label Formats

The CL 5000 comes with 50 preset common label formats stored in memory. Up to 20 more custom label formats can be added using the label editing function of the CL-Works software program. Various die cut or continuous label sizes up to 120mm in length can be used.



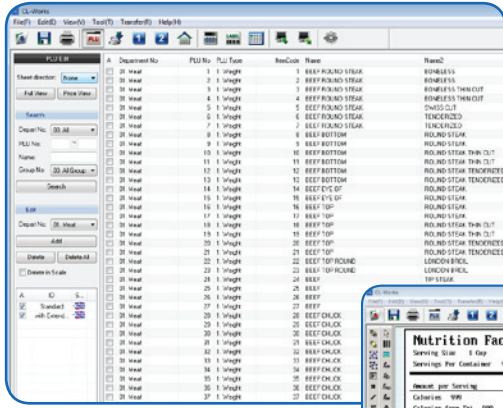
PRINTER & LABEL CARTRIDGE

Achieve print speeds up to 100 mm/sec and print resolution of 202 dpi for crisp clear labels. The removable label cartridge makes it easy for users to quickly reload labels. Designed for simplicity.



CL 5000 LABEL PRINTING Scale

CL WORKS - PC SOFTWARE

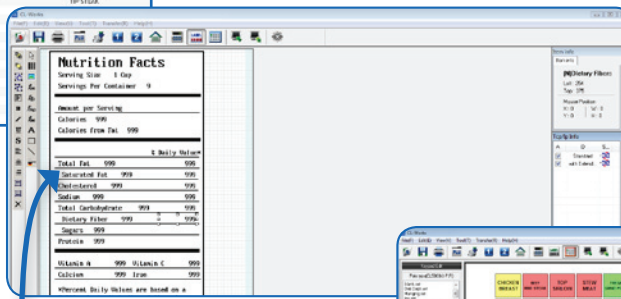


PLU Editor

Easy PLU Management control for all scales. PLU's can be imported and exported easily

The CL Works software program allows you to create and edit PLUs, program store information, design custom labels and unique keyboard layouts and much, much more.

Compatible with Microsoft Windows® 2000/XP/Vista



Label Editor

Create and edit custom label formats. Easily download your custom labels to the scales.

Keypad Editor

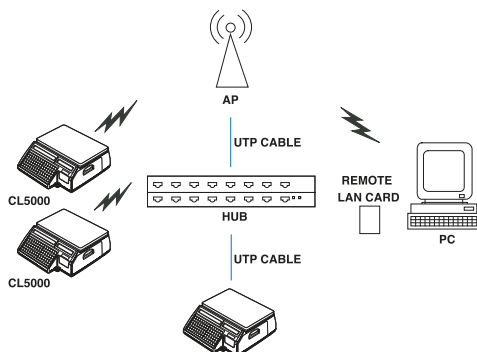
Setup and download custom keyboard designs. Use color images in your keys for easy recognition.



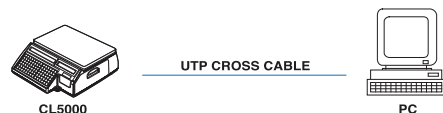
Nutrition Facts Label

OPTIONAL NETWORKING

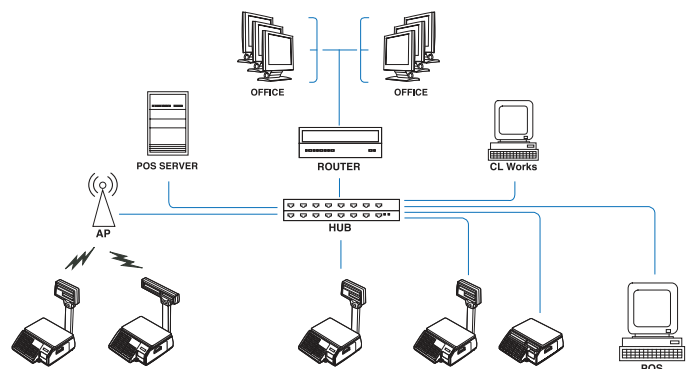
- TCP/IP Communication Protocol
- Up to 99 Scales
- IEEE 802.11B Specification Wireless Network
- 64/128 bit WEP Security system
- 1 to 1, Multi to Multi. Wired/Wireless Network
- Network structure suitable for large, medium or small markets



Multi to Multi



1 to 1



Wired/Wireless Network

CL 5000 LABEL PRINTING Scale

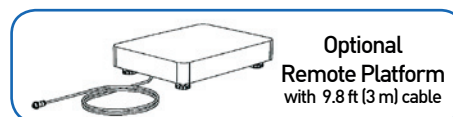
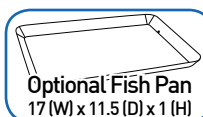
Features

- 60 lb Capacity Dual Range
- Standard: 3,000 PLU's & 1,000 Ingredients
Optional: 10,000 PLU's & 1,500 Ingredients
- Speed Keys
CL5000B: 96 [48 keys x 2]
CL5000R: 144 [72 keys x 2]
CL5000H: 144 [72 keys x 2]
- 50 Standard Label Formats/Up to 20 Custom Labels
- High Speed Thermal Printer
- Flash ROM for easy firmware upgrades
- Multiple barcode formats

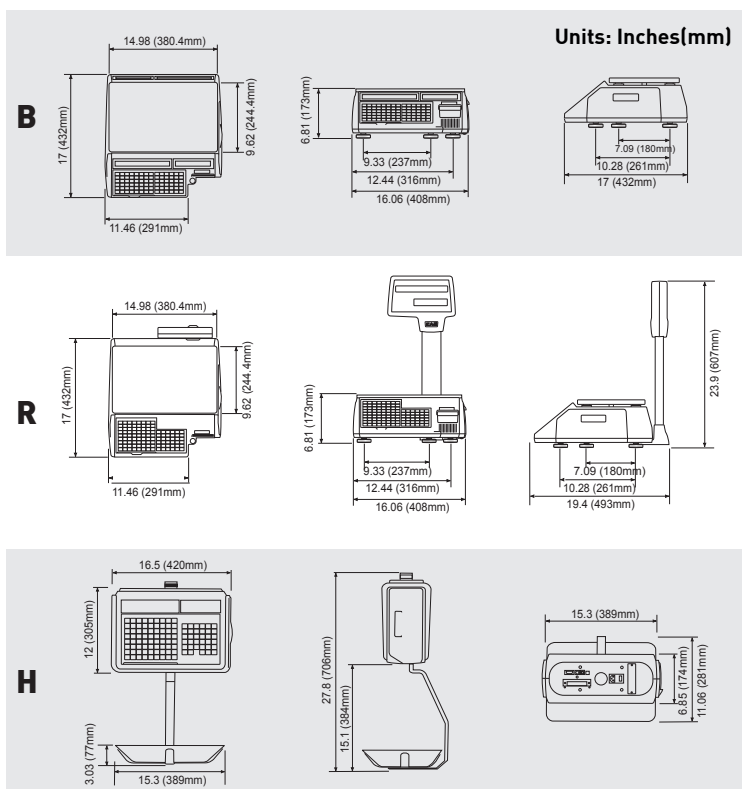
- English, Chinese, Korean, or Spanish Characters
- Menu Code System
- CL-Works Software Package Included
 - PLU Editor - Label Editor - Keypad Editor
 - Compatible with Microsoft Windows® 2000/XP/Vista
- **Options:**
 - Ethernet or Wireless Networking - Expanded Memory
 - Full Body Protective Cover - Fish Pan
 - Remote Platform - Label Cartridge
- Legal for Trade - COC # 07-042A2

Specifications

Weighing Capacity	60 lb Capacity Dual Range 0 - 30 x 0.01 lbs / 30 - 60 x 0.02 lbs 0 - 15 kg x 5 g / 15 - 30 kg x 10 g
Measurement Type	Load Cell
Display Type	VFD & Alphanumeric
Display Digit	4/4/6/6 - Tare/Weight/Unit Pr/Total Pr
Weight Units	Lb or kg
Printer	Thermal Print
Label Size	Width: 40mm ~ 60mm Length: 30mm ~ 120mm
Barcode Formats	UPC, UPC13, EAN13, EAN13+5, I2of5, Code128, Code93, Codabar, and more.
Interface	RS-232C
Keyboard Interface	PS/2
Power Source	AC 100~240V, 50/60Hz
Operating Temperature	-10°C ~ 40°C / 14°F ~ 104°F
Platter Size (inch/mm)	B/R: 15 (W) x 9.6 (D) / 381 (W) x 244 (D) H: 15.3 (W) x 11.06 (D) / 389 (W) x 281 (D) RP: 15.75 (W) x 11.8 (D) x 3.4 (D) / 400 (W) x 300 (D) x 86 (H)
Dimensions (inch/mm)	CL5000B (in): 16 (W) x 17 (D) x 6.8 (H) (mm) 406.4 (W) x 432 (D) x 173 (H) CL5000R (in): 16 (W) x 17 (D) x 23.9 (H) (mm) 406.4 (W) x 432 (D) x 607 (H) CL5000H (in): 16.5 (W) x 11.06 (D) x 27.8 (H) (mm) 420 (W) x 281 (D) x 706 (H)
Product Weight	CL5000B: 24 lbs (10.9 kg) CL5000R: 25 lbs (11.3 kg) CL5000H: 31.3 lbs (14.2 kg) CL5000RP: 23.8 lbs (10.8 kg)



Dimensions



CAS USA Corporation Corporate Office

99 Murray Hill Parkway
East Rutherford, NJ 07073

Tel: (201) 933-9002

Fax: (201) 933-9025

<http://www.cas-usa.com>



Legacy Technology Services

We Rent & Sell All Types Of Barcode Equipment

Call now to talk to an expert

866-271-9891

www.LegacyGlobal.com

Some brands we carry



MOTOROLA

Intermec

DATALOGIC™

Honeywell

EQUINOX
PAYMENTS



About us

- Legacy Technology Services is a leading nationwide provider of mobile computing, barcode, printers and point of sale equipment and services.
- For over a decade, thousands of clients across North America have trusted us to provide equipment from leading manufacturers backed by the services to support them.

Latest Hardware from top manufacturers

- Legacy handles virtually every major manufacturer of mobile computing, barcoding and point of sale equipment.

Expert Repair and Maintenance services

- Legacy is one of the best repair facilities in North America

Discontinued product sourcing

- They don't make it anymore? Our inventory also includes manufacturer close-outs and discontinued equipment to support our clients legacy infrastructure.

Trade-in and Disposal services

- That old equipment laying around your facility may still have some value. Legacy routinely purchases equipment from our clients around the globe.
 - Data destruction
 - Hardware disposal
 - Auditing services

Dedicated client account team

- Dedicated, highly trained account managers are here to answer all your questions and provide top notch service.

Equipment rental services

- Sometimes renting is a better solution, Legacy's huge rental inventory provides the equipment you need for temporary needs and projects.



Legacy, Inc.

160 West Road,
Ellington, CT 06029

Toll Free: 866-271-9891

Fax: 888-522-4684